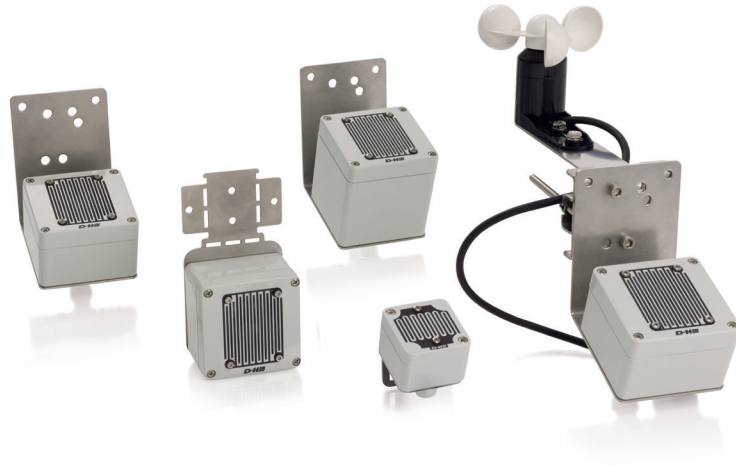


VRS / REM / WRG



Performance features

- » Suitable for connecting to all D+H SHEV and ventilation control panels
- » Also available with radio signal (REM 801-RC)
- » Flexible installation
- » Integrated wind signal emitter (optional)

Type	Art. No.	Description	Technical data
------	----------	-------------	----------------

VRS 10

30.300.90

Rain detector



- » For rain monitoring of ventilation flaps in conjunction with 24 V DC SHEV and ventilation control panels
- » Rain signal is stored for approx. 2 minutes (rain hold time)
- » Rain sensor in compact design, 24 V DC
- » Heated sensor area

Supply	24 V DC / 0.05 A
Type of protection	IP 65
Temperature range	-20 °C ... +60 °C
Housing	Polycarbonate
Colour	Grey (~ RAL 7035)
W x H x D	50 x 70 x 66 mm
Weight	0.40 kg

Type	Art. No.	Description	Technical data
------	----------	-------------	----------------

REM 42

30.301.00

Rain detector



- » For rain monitoring of ventilation flaps in conjunction with 24 V DC drives and D+H control panels
- » Rain signal is stored for approx. 2 minutes (rain hold time)
- » Heated sensor area

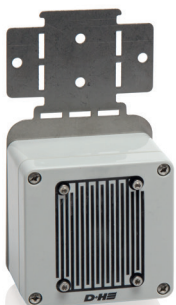
Supply	24 V DC / 0.2 A
Type of protection	IP 65
Temperature range	-20 °C ... +60 °C
Housing	Polycarbonate
Colour	Grey (~ RAL 7035)
W x H x D	85 x 150 x 110 mm
Weight	0.50 kg

Type	Art. No.	Description	Technical data
------	----------	-------------	----------------

REM 801-RC

30.302.20

Wireless rain detector



- » Presence monitoring in wireless operation
- » Signal output via radio or switching contact
- » Integrated test function for controlling the reception quality
- » Rain signal is stored for approx. 5 minutes (rain hold time)
- » Heated sensor area (not possible in battery operation)

Input voltage	24 V DC
Type of protection	IP 33
Temperature range	-20 °C ... +60 °C
Radio frequency	868.3 MHz / FSK
Housing	Polycarbonate
Colour	Grey (~ RAL 7035)
W x H x D	80 x 82 x 55 mm
Weight	0.50 kg

Type	Art. No.	Description	Technical data														
REM 230	30.300.20	<p>Rain detector</p> <ul style="list-style-type: none"> » For rain monitoring of ventilation flaps in conjunction with 230 V AC drives » Rain signal is stored for approx. 2 minutes (rain hold time) » Switching contact: Change over contact 230 V AC, max. 5 A » Heated sensor area 	<table border="1"> <tr> <td>Supply</td> <td>230 V AC / 50 Hz / 5 VA</td> </tr> <tr> <td>Type of protection</td> <td>IP 65</td> </tr> <tr> <td>Temperature range</td> <td>-20 °C ... +60 °C</td> </tr> <tr> <td>Housing</td> <td>Polycarbonate</td> </tr> <tr> <td>Colour</td> <td>Grey (~ RAL 7035)</td> </tr> <tr> <td>W x H x D</td> <td>85 x 150 x 120 mm</td> </tr> <tr> <td>Weight</td> <td>1.30 kg</td> </tr> </table>	Supply	230 V AC / 50 Hz / 5 VA	Type of protection	IP 65	Temperature range	-20 °C ... +60 °C	Housing	Polycarbonate	Colour	Grey (~ RAL 7035)	W x H x D	85 x 150 x 120 mm	Weight	1.30 kg
Supply	230 V AC / 50 Hz / 5 VA																
Type of protection	IP 65																
Temperature range	-20 °C ... +60 °C																
Housing	Polycarbonate																
Colour	Grey (~ RAL 7035)																
W x H x D	85 x 150 x 120 mm																
Weight	1.30 kg																



Type	Art. No.	Description	Technical data												
WRG 82	30.301.10	<p>Wind / rain sensor</p> <ul style="list-style-type: none"> » Rain signal is stored for approx. 2 minutes (rain hold time) » Wind switching threshold via DIP switch configurable to 4 or 6 Bft. » Signal retention time of the wind signal for approx. 10 minutes » In combination with WE 516, WME 43 or WRZ 8000, it is possible to continuously adjust the wind switching threshold between 2-8 Bft.; the signal retention time can be selected between 1-15 min. » Heated sensor area 	<table border="1"> <tr> <td>Supply</td> <td>24 V DC / 0.2 A</td> </tr> <tr> <td>Type of protection</td> <td>IP 54</td> </tr> <tr> <td>Temperature range</td> <td>-20 °C ... +60 °C</td> </tr> <tr> <td>Housing</td> <td>Polycarbonate</td> </tr> <tr> <td>W x H x D</td> <td>85 x 100 x 400 mm</td> </tr> <tr> <td>Weight</td> <td>2.00 kg</td> </tr> </table>	Supply	24 V DC / 0.2 A	Type of protection	IP 54	Temperature range	-20 °C ... +60 °C	Housing	Polycarbonate	W x H x D	85 x 100 x 400 mm	Weight	2.00 kg
Supply	24 V DC / 0.2 A														
Type of protection	IP 54														
Temperature range	-20 °C ... +60 °C														
Housing	Polycarbonate														
W x H x D	85 x 100 x 400 mm														
Weight	2.00 kg														



Type	Art. No.	Description	Technical data				
AMB	70.600.05	<p>Antenna mast mounting</p> <ul style="list-style-type: none"> » Suitable for installation to an antenna mast for diameters of 42 to 60 mm 	<table border="1"> <tr> <td>Colour</td> <td>Silver</td> </tr> <tr> <td>Weight</td> <td>0.35 kg</td> </tr> </table>	Colour	Silver	Weight	0.35 kg
Colour	Silver						
Weight	0.35 kg						

